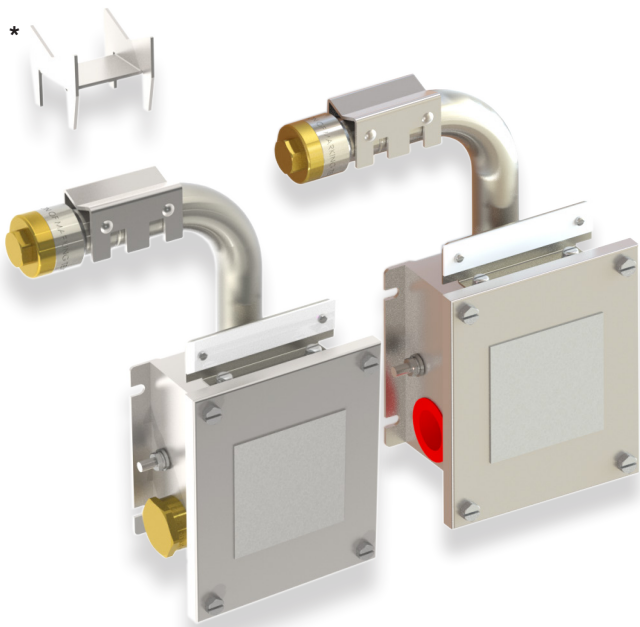


TRANBERG JUNCTION BOX TYPE 1058 FOR HEAT TRACE PIPE MOUNTED ZONE 1, ZONE 2 & SAFE AREA



* Elevator for high temperature lines shown on picture



Tranberg's heat trace boxes are represented in most of the oil installations in the North Sea, and also petrochemical industries and other industries subjected to rough environments.

Tranberg have designed and manufactured heat tracing equipment, and heating applications for rough environments, for more than 25 years. Our product range includes therefore a number of different heat tracing junction boxes.

TECHNICAL DATA

Ex-protection:	Ex II 2 G Ex eb IIC T5
Protection:	IP66 / IP67
Material:	AISI 316L / EN 1.4404
Finish 1058 1106 & 1058 1116:	Bright chemical dip
Finish 1058 1126 & 1058 1136:	Electro polished
Voltage:	Max. 4(6) mm ² 440V
T_{amb} with silicon gasket (standard):	-50°C to +50°C

APPLICATION

- Hazardous areas
- Chemical and petrochemical industries
- Industrial plants (frost protection or temperature maintenance)
- According to NORSOK requirements

FEATURES AND BENEFITS

- High ingress protection. IP66/67. IP67 without drain plug.
- Manufactured in acid proof stainless steel (AISI 316L).
- Stainless steel Type Label spot welded to the cover.
- Several earthing alternatives.
- Maximum strength and corrosion resistance.
- High operational reliability.
- Low lifetime maintenance cost.
- Recommended for up to 2 heating cables.

EQUIPPED WITH

- 1 pc. Transition unit with stopping plug
- 4 pcs. Terminals PHOENIX MXK 4 E
- 2 pcs. Terminals PHOENIX MBK 6/E
- 3 pcs. Ø25 entries

APPROVALS AND CERTIFICATES

Approval:	ATEX: Presafe 14ATEX4124 IECEX: IECEX PRE 14.0001
------------------	--

Subject to change without prior notice

TRANBERG®

DESCRIPTION

	Weight	Part No.
Junction box with 4 pc. Ø25 entries. Bight chemical dip. * Note 1 : Label kit not included	1,17 kg.	1058 1106
Junction box with 4 pc. Ø25 entries. Electro polished. * Note 1 : Label kit not included	1.17 kg.	1058 1126
Junction box with 1 pc. cable gland E204/622 M25/D9 (Ø13,0-17,0mm), 1 pc. stopping plug M25 and 1 pc. drainplug M25. Bright chemical dip	1.47 kg.	1058 1116
Junction box with 1 pc. cable gland E204/622 M25/D9 (Ø13,0-17,0mm), 1 pc. stopping plug M25 and 1 pc. drainplug M25. Electro polished	1.47 kg.	1058 1136

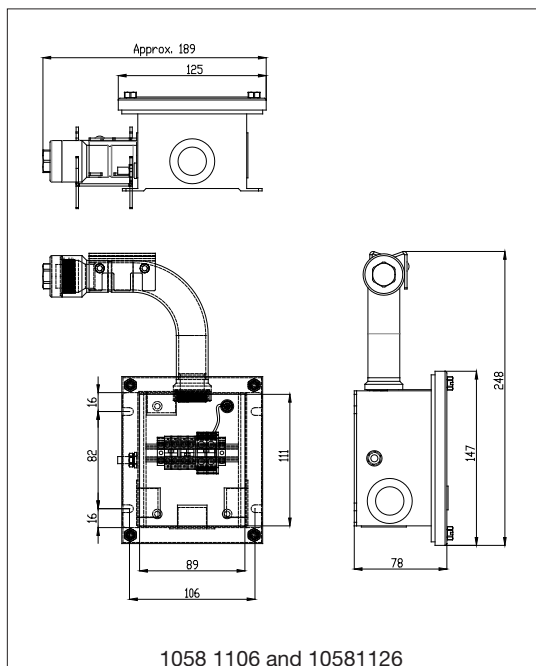
DESCRIPTION ACCESSORIES

	Weight	Part No.
Connection kit pipe mounting 5x11 M28x1 HOT for Raychem Cables 3BTV-5BTV-10QTV-15QTV-XTV-KTV-VPL	0,06 kg.	9179 223
Connection kit pipe mounting 5x15 M28x1 HOT for Raychem Cables 8BTV-10BTV-20QTV-XTV-KTV	0,06 kg.	9179 218
Connection kit pipe mounting 5x11/5x15 M28x1 HOT for all Raychem Cables	0,06 kg.	9179 220
Connection kit pipe mounting 5x11 M28x1 COLD for Raychem Cables 3BTV-5BTV-10QTV-15QTV-XTV-KTV-VPL	0,06 kg.	9179 225
Connection kit pipe mounting 5x15 M28x1 COLD for Raychem Cables 8BTV-10BTV-20QTV-XTV-KTV	0,06 kg.	9179 199
Connection kit pipe mounting 5x11/5x15 M28x1 COLD for all Raychem Cables		9179 215

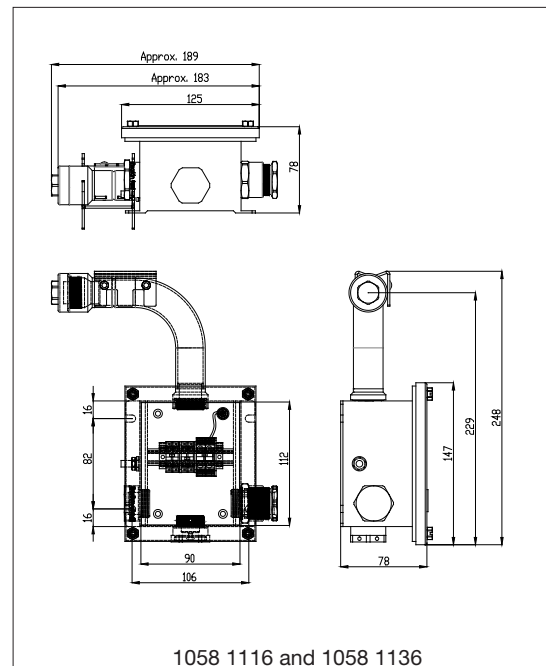
Note: Please see datasheet TPS5686, connection kit for pipe mounting, for more part numbers and details on connection kit.

Elevator for high temperature line		6071
Cable Gland Exe: E204/622 M25/D9/9mm (Ø13,0-17,0mm), w/ lock nut	0,1 kg.	6222 532
Cable Gland Exe: E204/622 M25/D1/9mm (Ø15,0-20,1mm), w/ lock nut	0,1 kg.	6222 512
Stopping plug, Brass M25 Exe with lock nut	0,1 kg.	6502 502
Drain plug, Brass M25 Exe with lock nut	0,1 kg.	7302 106
Trafolyte label with mounting kit		9090 025

DIMENSIONS AND ILLUSTRATIONS



100A108864



100A108865

TRANBERG®